

Veolia Environmental Services (Staffordshire) Ltd.

- Presentation to Community Liaison Group
- Thursday 16 June 2011,
Calf Heath Village Hall, Calf Heath, Staffordshire



Agenda

- Welcome
- Introductions
- Apologies
- Terms of Reference
- Appointment of Community Representatives
- Construction Programme and Key Stages/Including views of site today
- Photomontage
- AOB
- Date for next meeting



Staffordshire County Council Attendees

- Ian Benson
- Councillor Rob Marshall (CLG Chair)



Terms of Reference

- Purpose
- Membership
- Operation
- Communication and administration



Appointment of Community and Business Representatives

- To choose Community and Business Representatives
 - Two Community Representatives
 - Two Business Representatives



Project W2R – The Story so Far!

- Preferred Bidder Announcement, May 2010
- Contract Signature, July 2010
- Planning Application Submitted, August 2010
- Planning Committee Resolution, February 2011
- Planning Permission Issued 18 February 2011
- Construction Commencement, Spring 2011
- Service Commencement Date, December 2013



Key Aspects of the Project

- Facility Located at The Dell, Enterprise Drive, Four Ashes
- Plant Capacity 300,000 tonnes per annum, generating 23MWe
- Residual Household and HWRC Waste Input with Commercial waste top-up

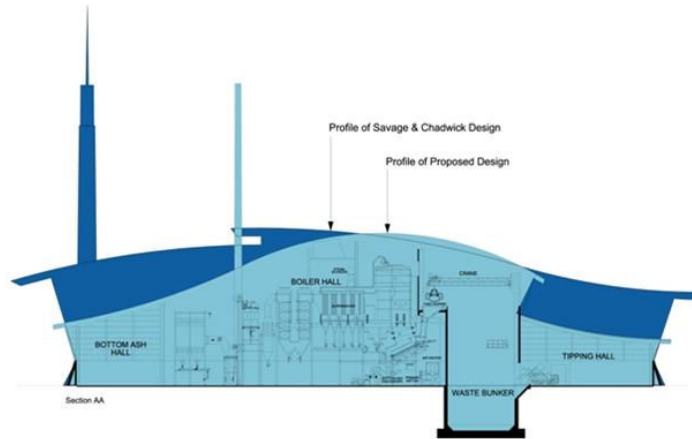


Key Changes from Original Design

- Removed external access ramp
- Slimmed stack and brought in board
- Reduced overall plant mass
- Adjusted eaves angles and green roof area



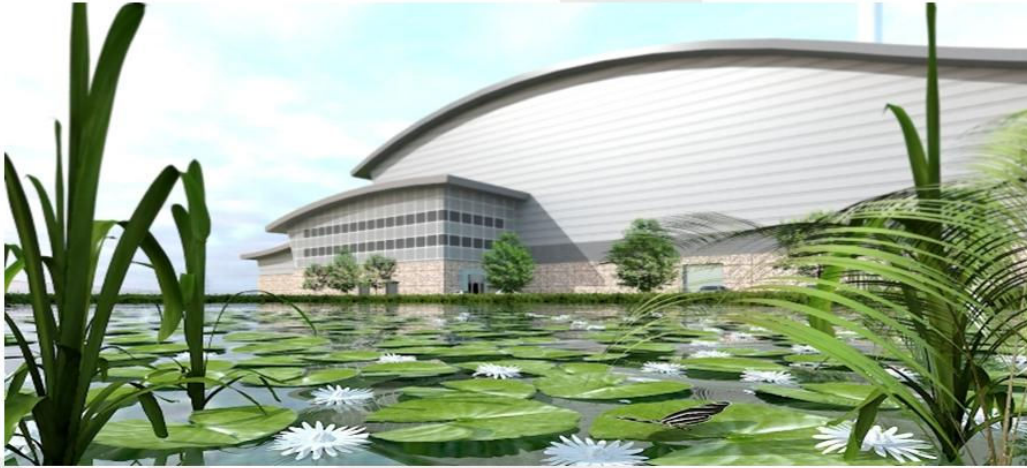
Profile Comparison with Original Design



Aerial View from North West angle



View of North-facing Facade



A few key facts!

- o Build duration c. 30 months
- o Construction staff c. 300 max
- o Operation staff c 40 full time
- o 25 year Contract from Service Commencement Date

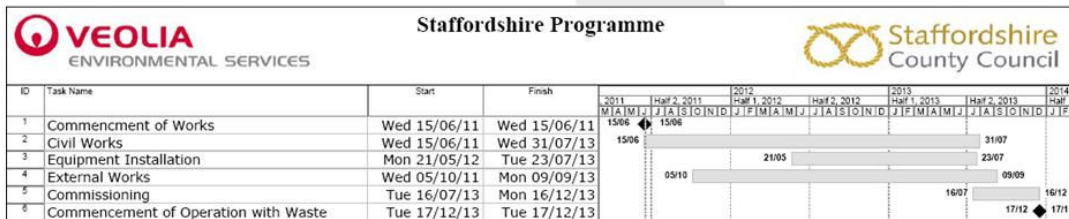


Combined Heat & Power

- Feasibility Studies being carried out
- SI Group & Featherstone Prison for base load
- Pipe route and logistics study underway



Construction Programme and Key Stages



What next.....Phase 1

- **Occupy and establish site infrastructure to Construction and Environmental Management Plan**
- **Form site access road**
- **Cut and fill to form site levels**
- **Formation of Phase One site drainage and attenuation Ponds**
- **Formation of site roads**
- **Formation of Piling Mat**
- **Commence piling**
- **Construct secant wall**
- **Commence construction base and walls to Bunker**
- **Erect Tower crane**
- **Commence foundation to - Tipping Hall, Boiler, Turbines etc**





Future Arrangements

- o Further meetings of the CLG
- o Into the main Construction activity
- o Veolia first point of Contact, Hilary Hampton
- o 01902 794703
- o info.staffordshire@veolia.co.uk



